

Welcome to the
MAY 2018 SEARCH

1. Yellow Archangel
2. "Yellow tip butterfly"
3. "Peacock Butterfly".
- 4 Broom
5. Marsh marigold.
6. BRIMSTONE butterfly.
7. Long nosed bee fly.
8. Pine resin found in car park.
9. Lesser celandine.

BLUEBELLS



White variety also in
 this wood



Stout shoes

Ground good

Very few orchids

If you know where



1

Lamium galeobdolon



2

Anthocharis cardamines.



3

Aglais io



4

Cytisus scoparius



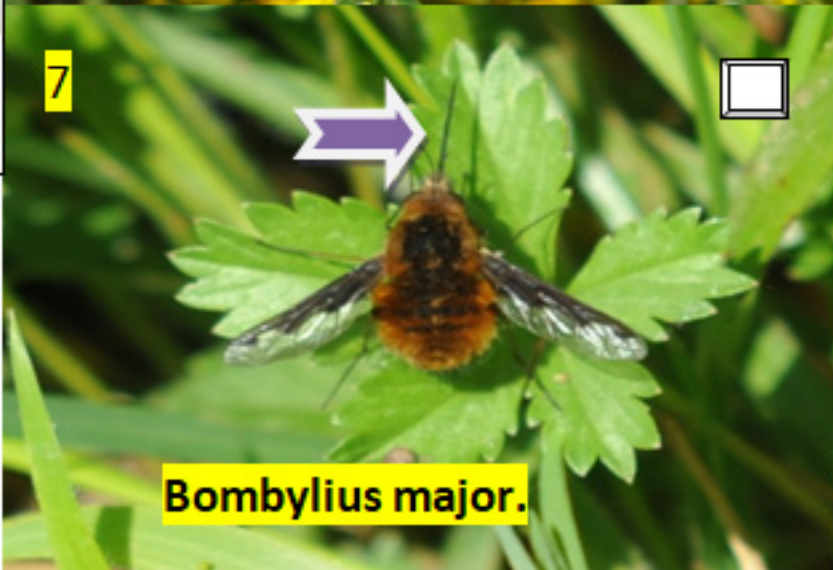
5

Caltha palustris.



6

Gonepteryx rhamni.



7

Bombylius major.



8

SAP or RESIN



9

Ficaria verna.



ENJOY YOUR VISIT **MAIN** path through **GOOD** side paths in places muddy care needed

please do not pick wild flowers leave for others to enjoy!

Look out for **Birds**, **Squirrel**, **Bats**, **Deer**, **primroses**, **BLUEBELLS** in **N-E section of wood** see map, **yellow tip butterfly** added again as more than usual this year

Please use the bins provided should they be full try to take your litter/ other home, thank you.

If you are viewing on a mobile phone do not forget to **scroll up** for a link to a map of these woods.

Do not forget to keep items of value out of sight when you leave your vehicles,