

NOVEMBER 2015

Welcome to this
month's search.



Answer to the October
question also known as,
"Daddy long legs"

1. Homemade Roller.
2. Fallen Oak leaves.
3. Black Poplar leaf.
4. Autumn Bracken.
5. Vandlised bark.
6. Blackberry leaves.
7. Silverweed.
8. Autumn beech.
9. A mole "Hill"

November Question
What age would you
expect a coppiced,
common beech stand
to live for

Have a safe NOV 5th



1



2



3



4



5



6



7

Potentilla anserina

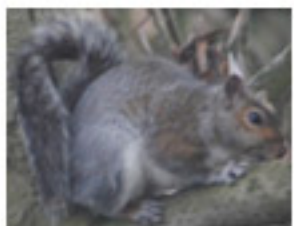


8

Fagus sylvatica



9



Remember pathways when wet, become VERY slippery especially the north east area of the wood (Chestnut area) take care when walking, enjoy the Autumn colour.